

Memo to Jones Library about Kinsey Garden move:

1. Current pictures of the Kinsey, with circles drawn around the plants/bushes/benches/paths/signage/trees/etc that will be removed.
2. A written memo explaining our plan. Include descriptions of what will be removed, the fundraising to be involved, where it will go, what will be left when its gone (i.e., it will be safe – but we will not be planting anything new until the expansion project is done), who has approved this project already (include your original approved proposal along with Carol's letter of support), and future building project plans (i.e., the Library gardens will be redesigned/replanted as part of the upcoming project).

Kestrel Trust hopes to root prune the trees and shrubs that we would like to move during the month of April this year – spring 2022. We are currently looking into what might be able to be moved this spring for one of the entrance areas at Kestrel Trust. The remainder of plants to be moved will be done in the fall (evergreens) and a year from now (shrubs and other small trees)

We will forward a map of the garden with plants marked (with numbers and photographs on an attached sheet) that we think are realistic to move.

It may not be possible to move a number of the largest trees – they will be left. We plan to smooth out the soil where the plants have been removed , so that there is no danger to people walking between the library and the parking lot.

We hope to initiate a “Go Fund Me” campaign for raising money for the move. It will most likely be in the neighborhood of \$10,000.

The trees and shrubs will be moved to the new Kestrel Land Trust property on 37 Bay Road.

We have no involvement in the design of what the future Jones Library garden will be like. Perhaps some of the trees that we cannot move may be able to be saved.

With many thanks,
Jane Bryden (for the Kestrel Trust)



Plants to move from Jones Library to Kestrel:

Photographs 1:

1. Indigofera heterophylla
2. Grasses – Miscanthus
3. Viburnum
4. Japanese Maple 'Orangeola
5. Summersweet: Clethra alnifolia
6. Grass -miscanthus
7. Clethra alnifolia
8. Spiraea japonica 'Shibori'
9. Grass – Miscanthus
10. Japanese Maple 'Red Dragon'
11. Ilex verticillata – (4) Red Sprite
12. Japanese Maple 'aureum'
13. Japanese Maple 'AKA shigatatsu sawa'
14. Hawthorne 'Winter King'

Photographs 2:

15. Hydrangea quercifolia (Oak Leaf)
16. Viburnum
17. Pieris japonica (Andromeda)
18. Sprite (Holly)
19. Ilex 'Red'
20. Syringa (lilac)
21. Pieris
22. Clethra
23. Rhododendron
24. Picea "Montgomery' (Spruce)
25. Fothergilla (to left)
26. Picea (Spruce) to right of steps)
27. Hypericum frondosum (St John's Wort)
28. Hinoki – False Cypress
29. Viburnum
30. Taxus beccata (Yew)
31. Climbing Hydrangea

More photographs of plants included – now without numbers

Photographs of Stone benches and pathways: 5 photographs

Perennials:

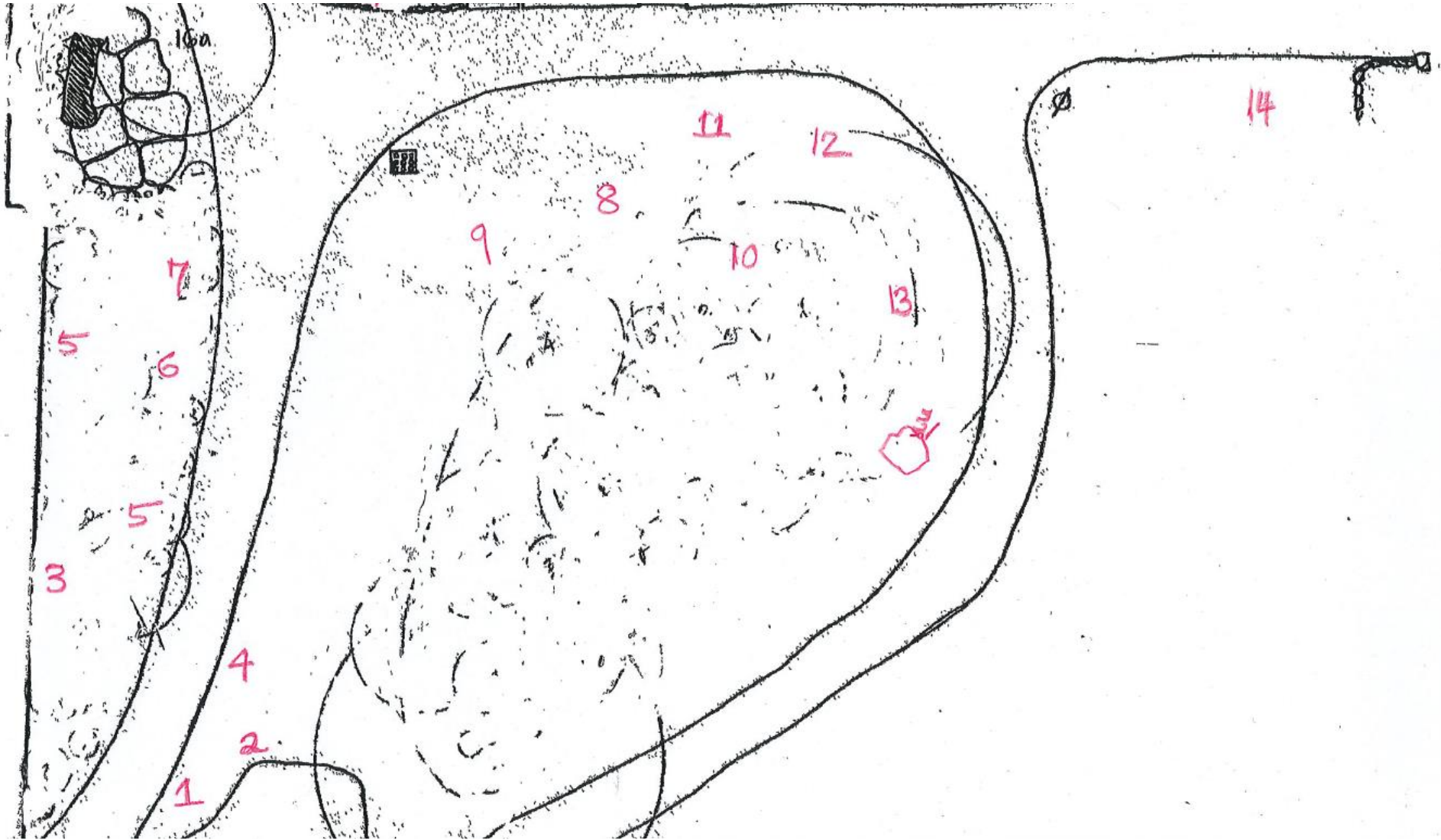
- Aruncus – goatsbeard – quite a few
- Hellebores – lots of them
- Geraniums
- Maidenhair ferns

Ground covers:

- Native ginger
- Lamium

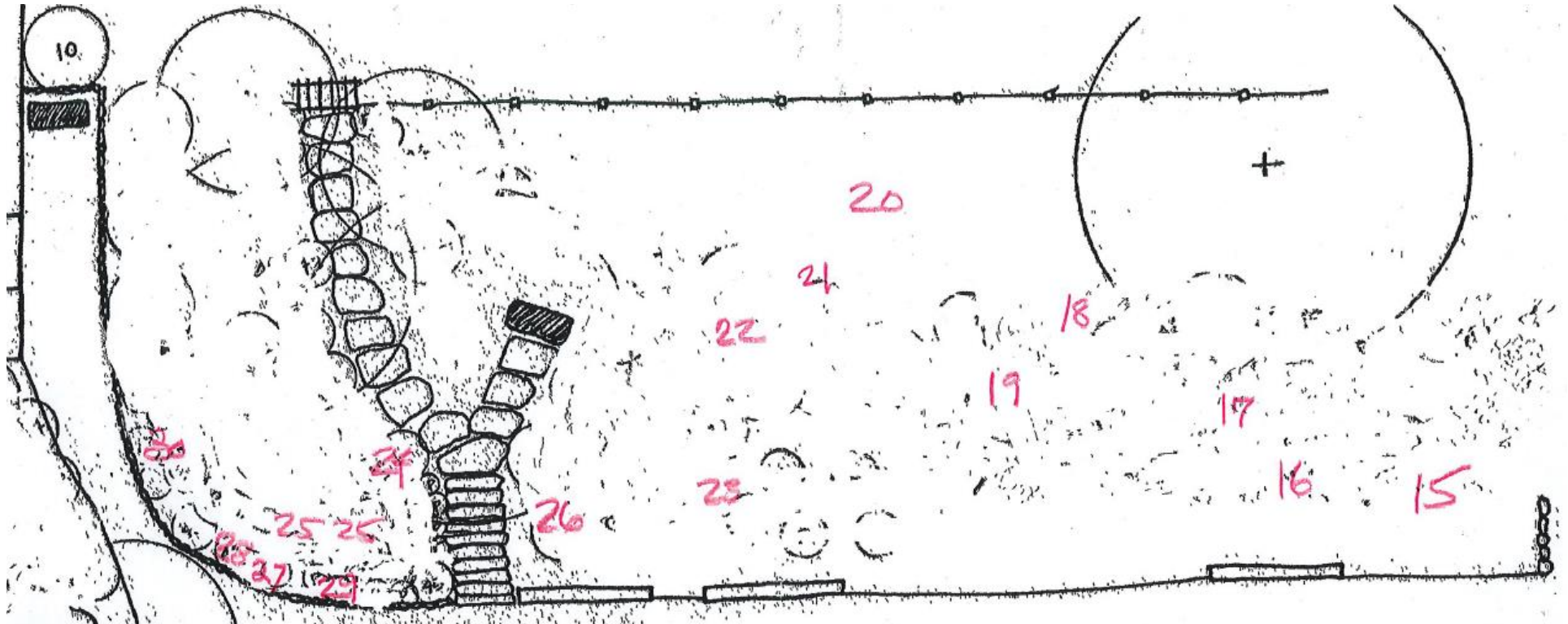
Jones Library & Kestrel Trust Proposal
Updated 4-11-22

Plants 1-14:



Jones Library & Kestrel Trust Proposal
Updated 4-11-22

Plants 15-30:



Appendix

